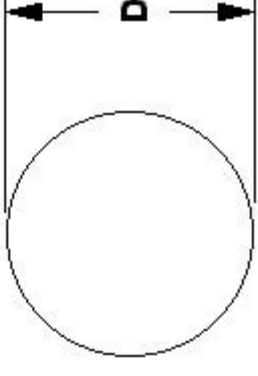




MBA

Balls - Stainless Steel - 316L Grade



Easier to machine than standard 316 grade

316L Stainless Steel has the same properties as 316, except that it has a lower carbon content. It is also easier to machine.

Non-magnetic. Resistant to severe corrosive conditions.

Hardness: Rockwell C: 25-39

Specific Gravity: 7.972

This catalogue to be read in conjunction with information at <http://www.minibearings.com.au/fcal/balls/>

Balls - Stainless Steel - 316L Grade

Part Number	Diameter (D) mm	Material	Precision Grade	Hardness	Properties	Colour	Specific Gravity
# BL-12.700-316L-G100	12.700	316L Grade Stainless	Grade 100	Rockwell C: 25-39	Same properties as 316, except that it has a lower carbon content. It is also easier to machine.	Silver	7.972

**E&OE Pricing and all details subject to change without notice - Copyright Miniature Bearings Australia Pty Ltd
MBA Size Listings are a guide to sizes only and must not be solely relied on for critical design information.**

MBA **MINIAMNURD**
BEARINGS
 Australia Pty Ltd



ABN 94 069 113 800

DISTRIBUTED BY

Ask us to put your name and address here

<http://www.minibearings.com.au/product>
 Ph +61 7 3349 1224
 Fax +61 7 3349 3801

Catalogue requests to catalogues@minibearings.com.au

