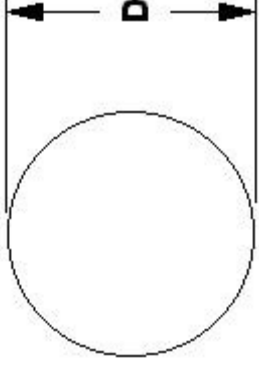




MBA

Balls - Stainless Steel - 316 Grade



A4 Grade. Low magnetic permeability. Resistant to severe corrosive conditions. Excellent welding and brazing qualities.

Tolerances available on request. Grade 100.

Hardness: Rockwell C: 25-39. Specific Gravity: 7.972

Low magnetic permeability. Resistant to severe corrosive conditions. Excellent welding and brazing qualities.

Note! Increase in magnetic permeability may occur due to the grinding process and can be relieved by heating to over 1000 Deg C.

This catalogue to be read in conjunction with information at <http://www.minibearings.com.au/fcal/balls/>

Balls - Stainless Steel - 316 Grade

Part Number	Diameter (D) mm	Material	Precision Grade	Hardness	Properties	Colour	Specific Gravity
BL-01.000-316-G100	1.000	316 Grade Stainless	Grade 100	Rockwell C: 25-39	Resistant to severe corrosive conditions	Silver	7.972
BL-01.588-316-G100	1.588	316 Grade Stainless	Grade 100	Rockwell C: 25-39	Resistant to severe corrosive conditions	Silver	7.972
BL-02.000-316-G100	2.000	316 Grade Stainless	Grade 100	Rockwell C: 25-39	Resistant to severe corrosive conditions	Silver	7.972
BL-02.381-316-G100	2.381	316 Grade Stainless	Grade 100	Rockwell C: 25-39	Resistant to severe corrosive conditions	Silver	7.972

E&OE Pricing and all details subject to change without notice - Copyright Miniature Bearings Australia Pty Ltd
MBA Size Listings are a guide to sizes only and must not be solely relied on for critical design information.

Balls - Stainless Steel - 316 Grade

Part Number	Diameter (D) mm	Material	Precision Grade	Hardness	Properties	Colour	Specific Gravity
BL-03.000-316-G100	3.000	316 Grade Stainless	Grade 100	Rockwell C: 25-39	Resistant to severe corrosive conditions	Silver	7.972
BL-03.175-316-G100	3.175	316 Grade Stainless	Grade 100	Rockwell C: 25-39	Resistant to severe corrosive conditions	Silver	7.972
BL-03.969-316-G100	3.969	316 Grade Stainless	Grade 100	Rockwell C: 25-39	Resistant to severe corrosive conditions	Silver	7.972
BL-04.000-316-G100	4.000	316 Grade Stainless	Grade 100	Rockwell C: 25-39	Resistant to severe corrosive conditions	Silver	7.972
BL-04.762-316-G100	4.763	316 Grade Stainless	Grade 100	Rockwell C: 25-39	Resistant to severe corrosive conditions	Silver	7.972
BL-05.000-316-G100	5.000	316 Grade Stainless	Grade 100	Rockwell C: 25-39	Resistant to severe corrosive conditions	Silver	7.972
BL-06.350-316-G100	6.350	316 Grade Stainless	Grade 100	Rockwell C: 25-39	Resistant to severe corrosive conditions	Silver	7.972
BL-07.938-316-G100	7.938	316 Grade Stainless	Grade 100	Rockwell C: 25-39	Resistant to severe corrosive conditions	Silver	7.972
BL-09.525-316-G100	9.525	316 Grade Stainless	Grade 100	Rockwell C: 25-39	Resistant to severe corrosive conditions	Silver	7.972
# BL-11.113-316-G200	11.113	316 Grade Stainless	200	Rockwell C: 25-39	Resistant to severe corrosive conditions	Silver	7.972
BL-12.700-316-G100	12.700	316 Grade Stainless	Grade 100	Rockwell C: 25-39	Resistant to severe corrosive conditions	Silver	7.972
BL-15.875-316-G100	15.875	316 Grade Stainless	Grade 100	Rockwell C: 25-39	Resistant to severe corrosive conditions	Silver	7.972
# BL-19.050-316-G100	19.050	316 Grade Stainless	Grade 100	Rockwell C: 25-39	Resistant to severe corrosive conditions	Silver	7.972
BL-25.400-316-G1000	25.400	316 Grade Stainless	Grade 1000	Rockwell C: 25-39	Resistant to severe corrosive conditions	Silver	7.972
# BL-31.750-316-G100	31.750	316 Grade Stainless	Grade 100	Rockwell C: 25-39	Resistant to severe corrosive conditions	Silver	7.972

E&OE Pricing and all details subject to change without notice - Copyright Miniature Bearings Australia Pty Ltd
MBA Size Listings are a guide to sizes only and must not be solely relied on for critical design information.

MBA **MINIAMNURD**
BEARINGS
 Australia Pty Ltd



ABN 94 069 113 800

DISTRIBUTED BY

Ask us to put your name and address here

<http://www.minibearings.com.au/product>
 Ph +61 7 3349 1224
 Fax +61 7 3349 3801

Catalogue requests to catalogues@minibearings.com.au

