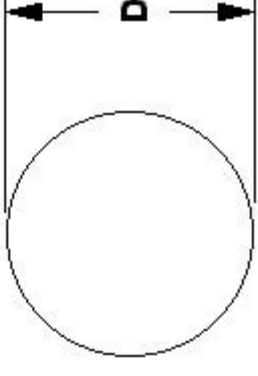




MBA

Balls - PTFE



No water absorption. Temperatures up to 288 Deg C.

Tolerances available on request

Not affected by any known acids or alkalies.

No water absorption. Temperatures up to 288 Deg C.

Unpolished

Specific Gravity: 2.3

This catalogue to be read in conjunction with information at <http://www.minibearings.com.au/fcal/balls/>

Balls - PTFE

Part Number	Diameter (D) mm	Material	Precision Grade	Hardness	Properties	Colour	Specific Gravity
BL-00.794-PTFE	0.794	Polytetrafluoroethylene	Commercial		No water absorption. Temperatures up to 288 Deg C.	White	2.3
BL-02.381-PTFE	2.381	Polytetrafluoroethylene	Commercial		No water absorption. Temperatures up to 288 Deg C.	White	2.3
BL-03.175-PTFE	3.175	Polytetrafluoroethylene	Commercial		No water absorption. Temperatures up to 288 Deg C.	White	2.3

E&OE Pricing and all details subject to change without notice - Copyright Miniature Bearings Australia Pty Ltd
MBA Size Listings are a guide to sizes only and must not be solely relied on for critical design information.

Balls - PTFE

Part Number	Diameter (D) mm	Material	Precision Grade	Hardness	Properties	Colour	Specific Gravity
BL-03.969-PTFE	3.969	Polytetrafluoroethylene	Commercial		No water absorption. Temperatures up to 288 Deg C.	White	2.3
BL-04.762-PTFE	4.763	Polytetrafluoroethylene	Commercial		No water absorption. Temperatures up to 288 Deg C.	White	2.3
# BL-05.556-PTFE	5.556	Polytetrafluoroethylene	Commercial		No water absorption. Temperatures up to 288 Deg C.	White	2.3
BL-06.350-PTFE	6.350	Polytetrafluoroethylene	Commercial		No water absorption. Temperatures up to 288 Deg C.	White	2.3
# BL-07.144-PTFE	7.144	Polytetrafluoroethylene	Commercial		No water absorption. Temperatures up to 288 Deg C.	White	2.3
BL-07.938-PTFE	7.938	Polytetrafluoroethylene	Commercial		No water absorption. Temperatures up to 288 Deg C.	White	2.3
BL-09.525-PTFE	9.525	Polytetrafluoroethylene	Commercial		No water absorption. Temperatures up to 288 Deg C.	White	2.3
BL-11.113-PTFE	11.113	Polytetrafluoroethylene	Commercial		No water absorption. Temperatures up to 288 Deg C.	White	2.3
BL-12.700-PTFE	12.700	Polytetrafluoroethylene	Commercial		No water absorption. Temperatures up to 288 Deg C.	White	2.3
# BL-14.288-PTFE	14.288	Polytetrafluoroethylene	Commercial		No water absorption. Temperatures up to 288 Deg C.	White	2.3
BL-15.875-PTFE	15.875	Polytetrafluoroethylene	Commercial		No water absorption. Temperatures up to 288 Deg C.	White	2.3

**E&OE Pricing and all details subject to change without notice - Copyright Miniature Bearings Australia Pty Ltd
MBA Size Listings are a guide to sizes only and must not be solely relied on for critical design information.**

Balls - PTFE

Part Number	Diameter (D) mm	Material	Precision Grade	Hardness	Properties	Colour	Specific Gravity
# BL-19.050-PTFE	19.050	Polytetrafluoroethylene	Commercial		No water absorption. Temperatures up to 288 Deg C.	White	2.3
# BL-22.225-PTFE	22.225	Polytetrafluoroethylene	Commercial		No water absorption. Temperatures up to 288 Deg C.	White	2.3
# BL-25.400-PTFE	25.400	Polytetrafluoroethylene	Commercial		No water absorption. Temperatures up to 288 Deg C.	White	2.3
# BL-30.163-PTFE	30.163	Polytetrafluoroethylene	Commercial		No water absorption. Temperatures up to 288 Deg C.	White	2.3
# BL-31.750-PTFE	31.750	Polytetrafluoroethylene	Commercial		No water absorption. Temperatures up to 288 Deg C.	White	2.3
# BL-38.100-PTFE	38.100	Polytetrafluoroethylene	Commercial		No water absorption. Temperatures up to 288 Deg C.	White	2.3
# BL-50.800-PTFE	50.800	Polytetrafluoroethylene	Commercial		No water absorption. Temperatures up to 288 Deg C.	White	2.3

**E&OE Pricing and all details subject to change without notice - Copyright Miniature Bearings Australia Pty Ltd
MBA Size Listings are a guide to sizes only and must not be solely relied on for critical design information.**

MBA **MINIAMNURD**
BEARINGS
 Australia Pty Ltd



ABN 94 069 113 800

DISTRIBUTED BY

Ask us to put your name and address here

<http://www.minibearings.com.au/product>
 Ph +61 7 3349 1224
 Fax +61 7 3349 3801

Catalogue requests to catalogues@minibearings.com.au

