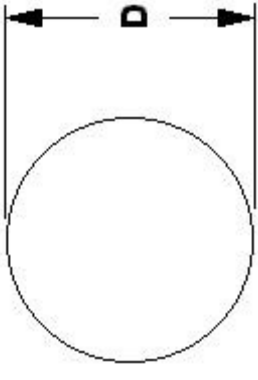


# MBA

## Balls - Hollow - Plastic



Fully enclosed hollow balls for use as covers in baths and tanks

This catalogue to be read in conjunction with information at <http://www.minibearings.com.au/fcal/balls/>

### Balls - Hollow - Plastic

Part Number	Diameter mm	Specific Gravity	Material	Temp. Range	Balls per Sq Mtr
# BLH-10.00-PP	10.00	0.38	Polypropylene	0 to 110 Deg. C	11570
# BLH-20.00-PP	20.00	0.24	Polypropylene	0 to 110 Deg. C	2910
# BLH-20.00-HDPE	20.00	0.24	HDPE	-60 to 71 Deg. C	2910
# BLH-38.00-PP	38.00	0.16	Polypropylene	0 to 110 Deg. C	800
# BLH-38.00-HDPE	38.00	0.16	HDPE	-60 to 71 Deg. C	800

**E&OE Pricing and all details subject to change without notice - Copyright Miniature Bearings Australia Pty Ltd  
MBA Size Listings are a guide to sizes only and must not be solely relied on for critical design information.**

**MBA** **MINIAMNURD**  
**BEARINGS**  
 Australia Pty Ltd



ABN 94 069 113 800

DISTRIBUTED BY

Ask us to put your name and address here

<http://www.minibearings.com.au/product>  
 Ph +61 7 3349 1224  
 Fax +61 7 3349 3801

Catalogue requests to [catalogues@minibearings.com.au](mailto:catalogues@minibearings.com.au)

