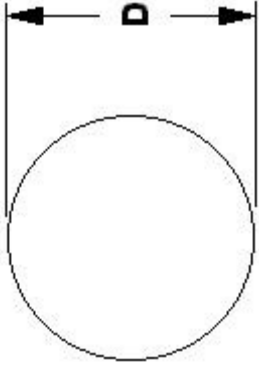




# MBA

## Balls - Chrome Steel



Hardness: Rockwell C: 60-70

Tolerances available on request

SAE 52100 Chrome Steel

Hardness: Rockwell C: 60-70

Specific Gravity: 7.833

This catalogue to be read in conjunction with information at <http://www.minibearings.com.au/ical/balls/>

### Balls - Chrome Steel

Part Number	Diameter (D) mm	Material	Precision Grade	Hardness	Properties	Colour	Specific Gravity
BL-00.250-CH-G3	0.250	SAE52100	Grade 3	Rockwell C: 60-70			7.833
# BL-00.300-CH-G3	0.300	SAE52100	Grade 3	Rockwell C: 60-70			7.833
BL-00.397-CH-G3	0.397	SAE52100	Grade 3	Rockwell C: 60-70			7.833
# BL-00.200-CH-G3	0.200	SAE52100	Grade 3	Rockwell C: 60-70			7.833
# BL-00.400-CH-G28	0.400	SAE52100	Grade 28	Rockwell C: 60-70			7.833
# BL-00.500-CH-G3	0.500	SAE52100	Grade 3	Rockwell C: 60-70			7.833
# BL-00.600-CH-G3	0.600	SAE52100	Grade 3	Rockwell C: 60-70			7.833
# BL-00.650-CH-G3	0.650	SAE52100	Grade 3	Rockwell C: 60-70			7.833

**E&OE Pricing and all details subject to change without notice - Copyright Miniature Bearings Australia Pty Ltd**  
**MBA Size Listings are a guide to sizes only and must not be solely relied on for critical design information.**

## Balls - Chrome Steel

Part Number	Diameter (D) mm	Material	Precision Grade	Hardness	Properties	Colour	Specific Gravity
# BL-00.700-CH-G28	0.700	SAE52100	Grade 28	Rockwell C: 60-70			7.833
# BL-00.794-CH-G3	0.794	SAE52100	Grade 3	Rockwell C: 60-70			7.833
BL-01.000-CH-G16	1.000	SAE52100	Grade 16	Rockwell C: 60-70			7.833
# BL-01.150-CH-G3	1.150	SAE52100	Grade 3	Rockwell C: 60-70			7.833
BL-01.191-CH-G3	1.191	SAE52100	Grade 3	Rockwell C: 60-70			7.833
# BL-01.200-CH-G28	1.200	SAE52100	Grade 28	Rockwell C: 60-70			7.833
# BL-01.500-CH-G28	1.500	SAE52100	Grade 28	Rockwell C: 60-70			7.833
# BL-01.500-CH-G2000x1KG	1.500	SAE52100	Grade 2000	Rockwell C: 60-70	1 KG = Approx 70,000 Balls		7.833
# BL-01.588-CH-G3	1.588	SAE52100	Grade 3	Rockwell C: 60-70			7.833
# BL-01.588-CH-G25	1.588	SAE52100	Grade 25	Rockwell C: 60-70			7.833
# BL-01.750-CH-G3	1.750	SAE52100	Grade 3	Rockwell C: 60-70			7.833
BL-02.000-CH-G10	2.000	SAE52100	Grade 10	Rockwell C: 60-70			7.833
# BL-02.100-CH-G3	2.100	SAE52100	Grade 3	Rockwell C: 60-70			7.833
BL-02.381-CH-G25	2.310	SAE52100	Grade 25	Rockwell C: 60-70			7.833
# BL-02.381-CH-G3	2.381	SAE52100	Grade 3	Rockwell C: 60-70			7.833
# BL-02.450-CH-G3	2.450	SAE52100	Grade 3	Rockwell C: 60-70			7.833
# BL-02.500-CH-G28	2.500	SAE52100	Grade 28	Rockwell C: 60-70			7.833
# BL-03.000-CH-G28	3.000	SAE52100	Grade 28	Rockwell C: 60-70			7.833
# BL-03.175-CH-G25	3.175	SAE52100	Grade 25	Rockwell C: 60-70			7.833
BL-03.400-CH-G25	3.400	SAE52100	25	Rockwell C: 60-70	-	-	7.833
BL-03.500-CH-G28	3.500	SAE52100	Grade 28	Rockwell C: 60-70			7.833
# BL-03.969-CH-G25	3.969	SAE52100	Grade 25	Rockwell C: 60-70			7.833
# BL-04.000-CH-G28	4.000	SAE52100	Grade 28	Rockwell C: 60-70			7.833
# BL-04.500-CH-G28	4.500	SAE52100	Grade 28	Rockwell C: 60-70			7.833

**E&OE Pricing and all details subject to change without notice - Copyright Miniature Bearings Australia Pty Ltd**  
**MBA Size Listings are a guide to sizes only and must not be solely relied on for critical design information.**

## Balls - Chrome Steel

Part Number	Diameter (D) mm	Material	Precision Grade	Hardness	Properties	Colour	Specific Gravity
BL-04.762-CH-G20	4.763	SAE52100	Grade 20	Rockwell C: 60-70			7.833
# BL-04.762-CH-G25	4.763	SAE52100	Grade 25	Rockwell C: 60-70			7.833
BL-05.000-CH-G28	5.000	SAE52100	Grade 28	Rockwell C: 60-70			7.833
# BL-05.000-CH-G3	5.000	SAE52100	Grade 3	Rockwell C: 60-70			7.833
# BL-05.500-CH-G28	5.500	SAE52100	Grade 28	Rockwell C: 60-70			7.833
# BL-05.556-CH-G25	5.556	SAE52100	Grade 25	Rockwell C: 60-70			7.833
# BL-05.556-CH-G28	5.556	SAE52100	Grade 28	Rockwell C: 60-70			7.833
# BL-06.350-CH-G20	6.350	SAE52100	Grade 20	Rockwell C: 60-70			7.833
BL-06.350-CH-G25	6.350	SAE52100	Grade 25	Rockwell C: 60-70			7.833
# BL-06.500-CH-G28	6.500	SAE52100	Grade 28	Rockwell C: 60-70			7.833
# BL-07.000-CH-G28	7.000	SAE52100	Grade 28	Rockwell C: 60-70			7.833
# BL-07.144-CH-G28	7.144	SAE52100	Grade 28	Rockwell C: 60-70			7.833
# BL-07.500-CH-G28	7.500	SAE52100	Grade 28	Rockwell C: 60-70			7.833
# BL-07.938-CH-G25	7.938	SAE52100	Grade 25	Rockwell C: 60-70			7.833
# BL-07.938-CH-G28	7.938	SAE52100	Grade 28	Rockwell C: 60-70			7.833
# BL-08.500-CH-G28	8.500	SAE52100	Grade 28	Rockwell C: 60-70			7.833
# BL-08.731-CH-G28	8.731	SAE52100	Grade 28	Rockwell C: 60-70			7.833
# BL-09.000-CH-G28	9.000	SAE52100	Grade 28	Rockwell C: 60-70			7.833
# BL-09.525-CH-G25	9.525	SAE52100	Grade 25	Rockwell C: 60-70			7.833
# BL-09.525-CH-G28	9.525	SAE52100	Grade 28	Rockwell C: 60-70			7.833
# BL-10.319-CH-G28	10.319	SAE52100	Grade 28	Rockwell C: 60-70			7.833
# BL-11.000-CH-G28	11.000	SAE52100	Grade 28	Rockwell C: 60-70			7.833
# BL-11.113-CH-G28	11.112	SAE52100	Grade 28	Rockwell C: 60-70			7.833
# BL-11.500-CH-G28	11.500	SAE52100	Grade 28	Rockwell C: 60-70			7.833

**E&OE Pricing and all details subject to change without notice - Copyright Miniature Bearings Australia Pty Ltd  
MBA Size Listings are a guide to sizes only and must not be solely relied on for critical design information.**

## Balls - Chrome Steel

Part Number	Diameter (D) mm	Material	Precision Grade	Hardness	Properties	Colour	Specific Gravity
# BL-11.906-CH-G28	11.906	SAE52100	Grade 28	Rockwell C: 60-70			7.833
# BL-12.000-CH-G28	12.000	SAE52100	Grade 28	Rockwell C: 60-70			7.833
# BL-12.500-CH-G28	12.500	SAE52100	Grade 28	Rockwell C: 60-70			7.833
BL-12.700-CH-G25	12.700	SAE52100	Grade 25	Rockwell C: 60-70			7.833

E&OE Pricing and all details subject to change without notice - Copyright Miniature Bearings Australia Pty Ltd  
MBA Size Listings are a guide to sizes only and must not be solely relied on for critical design information.

**MBA** **MINIAMNURD**  
**BEARINGS**  
 Australia Pty Ltd



ABN 94 069 113 800

DISTRIBUTED BY

Ask us to put your name and address here

<http://www.minibearings.com.au/product>  
 Ph +61 7 3349 1224  
 Fax +61 7 3349 3801

Catalogue requests to [catalogues@minibearings.com.au](mailto:catalogues@minibearings.com.au)

