



MBA

Balls - Bored - Plastic

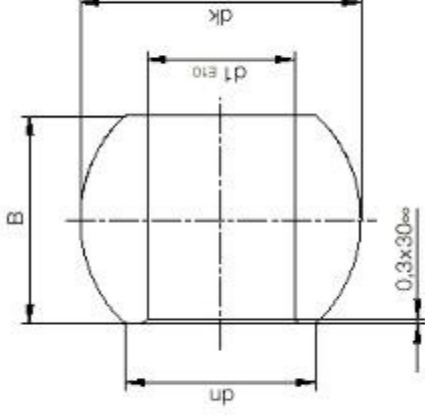
Bored acetal balls as used in plastic rod ends

Maintenance Free - Self Lubricating

Corrosion Resistant Iglidur W300 material

Suitable for rotating, oscillating and linear movement

Lightweight



This catalogue to be read in conjunction with information at <http://www.minibearings.com.au/ical/balls/>

Balls - Bored - Plastic

Part Number	Outside Diameter (dk) mm	Inside Diameter (d1) mm	Width (B) mm	Shoulder Diameter (dn) mm	Chamfer mm
BLB-05.200x02.000-IW300	05.200	02.000	04.000	3.90	0.3X30
BLB-07.900x03.000-IW300	07.900	03.000	06.000	5.40	0.3X30
# BLB-08.250x04.000-IW300	08.250	04.000	05.000	6.25	0.3X30
BLB-10.200x05.000-IW300	10.200	05.000	06.000	8.00	0.3X30
# BLB-10.200x06.000-IW300	10.200	06.000	06.000	8.00	0.3X30
# BLB-11.100x05.000-IW300	11.100	05.000	08.000	7.70	0.3X30
# BLB-11.280x04.830-IW300	11.280	04.830	07.920	7.62	0.3X30
# BLB-12.700x06.000-IW300	12.700	06.000	09.000	8.90	0.3X30

E&OE Pricing and all details subject to change without notice - Copyright Miniature Bearings Australia Pty Ltd
MBA Size Listings are a guide to sizes only and must not be solely relied on for critical design information.

Balls - Bored - Plastic

Part Number	Outside Diameter (dk) mm	Inside Diameter (d1) mm	Width (B) mm	Shoulder Diameter (dn) mm	Chamfer mm
# BLB-13.110x06.350-IW300	13.110	06.350	09.530	8.99	0.3X30
# BLB-13.200x08.000-IW300	13.200	08.000	08.000	10.00	0.3X30
BLB-15.800x08.000-IW300	15.800	08.000	12.000	10.30	0.3X30
# BLB-15.880x07.940-IW300	15.880	07.940	11.100	11.35	0.3X30
# BLB-16.000x10.000-IW300	16.000	10.000	09.000	13.00	0.3X30
# BLB-18.000x12.000-IW300	18.000	12.000	10.000	15.00	0.3X30
# BLB-18.240x09.530-IW300	18.240	09.530	12.700	12.80	0.3X30
BLB-19.000x10.000-IW300	19.000	10.000	14.000	12.90	0.3X30
BLB-21.030x11.110-IW300	21.030	11.110	14.270	15.27	0.3X30
# BLB-22.000x15.000-IW300	22.000	15.000	12.000	18.00	0.3X30
# BLB-22.220x12.000-IW300	22.220	12.000	16.000	15.40	0.3X30
# BLB-23.830x12.700-IW300	23.830	12.700	15.880	17.78	0.3X30
# BLB-25.100x17.000-IW300	25.100	17.000	14.000	20.00	0.3X30
# BLB-25.250x14.000-IW300	25.250	14.000	19.000	16.80	0.3X30
# BLB-28.300x16.000-IW300	28.300	16.000	21.000	19.30	0.3X30
# BLB-28.580x15.880-IW300	28.580	15.880	19.050	21.28	0.3X30
# BLB-28.900x20.000-IW300	28.900	20.000	16.000	24.00	0.3X30
# BLB-31.350x18.000-IW300	31.350	18.000	23.000	21.80	0.3X30
# BLB-33.320x19.050-IW300	33.320	19.050	22.230	24.84	0.3X30
# BLB-34.900x20.000-IW300	34.900	20.000	25.000	24.30	0.3X30
# BLB-35.500x25.000-IW300	35.500	25.000	20.000	29.00	0.3X30
# BLB-38.100x22.000-IW300	38.100	22.000	28.000	25.80	0.3X30
# BLB-40.900x30.000-IW300	40.900	30.000	22.000	34.00	0.3X30
# BLB-42.800x25.000-IW300	42.800	25.000	31.000	29.50	0.3X30

E&OE Pricing and all details subject to change without notice - Copyright Miniature Bearings Australia Pty Ltd
MBA Size Listings are a guide to sizes only and must not be solely relied on for critical design information.

Balls - Bored - Plastic

Part Number	Outside Diameter (dk) mm	Inside Diameter (d1) mm	Width (B) mm	Shoulder Diameter (dn) mm	Chamfer mm
# BLB-44.450X25.400-IW300	44.450	25.400	34.930	32.23	0.3X30
# BLB-51.000X30.000-IW300	51.000	30.000	37.000	34.80	0.3X30

E&OE Pricing and all details subject to change without notice - Copyright Miniature Bearings Australia Pty Ltd
MBA Size Listings are a guide to sizes only and must not be solely relied on for critical design information.

MBA **MINIAMNURD**
BEARINGS
 Australia Pty Ltd



ABN 94 069 113 800

DISTRIBUTED BY

Ask us to put your name and address here

<http://www.minibearings.com.au/product>
 Ph +61 7 3349 1224
 Fax +61 7 3349 3801

Catalogue requests to catalogues@minibearings.com.au

