

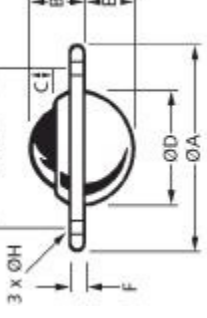


MBA

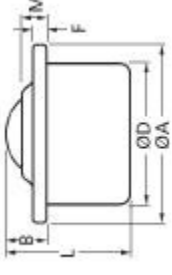
Ball Transfer Units - Standard Duty

For conveying materials. From miniature to large.

BISF Type Flange Fixing Unit



BTEU Type Euro Units



Ball Transfer Units - Standard Duty

Part Number	Ball Diameter mm	Flange Diameter (A Max.) mm	Ball Height from Flange (B) mm	Body Diameter (D) mm	Overall Height (L) mm	Material (Ball / Body)	Type	Seating Hole mm	Fixing Holes Nr.	Max Load KG
# BTEU-15SS	15.0	31.0	9.5+/-0.2	24+/-0.065	21.00	Stainless Steel 420C 55-58 HRC / Stainless Steel 304	BTEU Euro	To suit D	None	38
BTEU-15C	15.0	31.0	9.5+/-0.2	24+/-0.065	21.00	Carbon Steel 60-66 HRC / Zinc plated Mild Steel	BTEU Euro	To suit D	None	60
# BISF-19SS	19.0	61.0	10.0	29.1+/-0.2	22.00	Stainless Steel 420C 55-58 HRC / Stainless Steel 304	BISF Flange Fixing	29.5	3	25
BISF-19C	19.0	61.0	10.0	29.1+/-0.2	22.00	Carbon Steel 60-66 HRC / Zinc plated Mild Steel	BISF Flange Fixing	29.5	3	25

E&OE Pricing and all details subject to change without notice - Copyright Miniature Bearings Australia Pty Ltd
MBA Size Listings are a guide to sizes only and must not be solely relied on for critical design information.

Ball Transfer Units - Standard Duty

Part Number	Ball Diameter mm	Flange Diameter (A Max.) mm	Ball Height from Flange (B) mm	Body Diameter (D) mm	Overall Height (L) mm	Material (Ball / Body)	Type	Seating Hole mm	Fixing Holes Nr.	Max Load KG
# BTEU-22SS	22.0	45.0	9.8+/-0.2	36+/-0.080	30.00	Stainless Steel 420C 55-58 HRC / Stainless Steel 304	BTEU Euro	To suit D	None	100
# BTEU-22C	22.0	45.0	9.8+/-0.2	36+/-0.080	30.00	Carbon Steel 60-66 HRC / Zinc plated Mild Steel	BTEU Euro	To suit D	None	160
# BISF-25SS	25.0	73.0	14.20	37.2+/-0.2	30.00	Stainless Steel 420C 55-58 HRC / Stainless Steel 304	BISF Flange Fixing	38.1	3	55
# BISF-25C	25.0	73.0	14.20	37.2+/-0.2	30.00	Carbon Steel 60-66 HRC / Zinc plated Mild Steel	BISF Flange Fixing	38.1	3	55
# BTEU-30SS	30.0	55.0	13.8+/-0.3	45+/-0.080	37.00	Stainless Steel 420C 55-58 HRC / Stainless Steel 304	BTEU Euro	To suit D	None	200
# BTEU-30C	30.0	55.0	13.8+/-0.3	45+/-0.080	37.00	Carbon Steel 60-66 HRC / Zinc plated Mild Steel	BTEU Euro	To suit D	None	300
# BISF-32SS	32.0	73.7	16.20	45.5+/-0.2	36.10	Stainless Steel 420C 55-58 HRC / Stainless Steel 304	BISF Flange Fixing	46.0	3	125
# BISF-32C	32.0	73.7	16.20	45.5+/-0.2	36.10	Carbon Steel 60-66 HRC / Zinc plated Mild Steel	BISF Flange Fixing	46.0	3	125

**E&OE Pricing and all details subject to change without notice - Copyright Miniature Bearings Australia Pty Ltd
MBA Size Listings are a guide to sizes only and must not be solely relied on for critical design information.**

Ball Transfer Units - Standard Duty

Part Number	Ball Diameter mm	Flange Diameter (A Max.) mm	Ball Height from Flange (B) mm	Body Diameter (D) mm	Overall Height (L) mm	Material (Ball / Body)	Type	Seating Hole mm	Fixing Holes Nr.	Max Load KG
# B1SF-40SS	40.0	89.0	21.40	55.6+/-0.2	46.00	Stainless Steel 420C 55-58 HRC/ Stainless Steel 304	B1SF Flange Fixing	56.0	3	140
# B1SF-40C	40.0	89.0	21.40	55.6+/-0.2	46.00	Carbon Steel 60-66 HRC / Zinc plated Mild Steel	B1SF Flange Fixing	56.0	3	140
# BTEU-45C	45.0	75.0	19.0+/-0.4	62+/-0.095	53.50	Carbon Steel 60-66 HRC / Zinc plated Mild Steel	BTEU Euro	To suit D	None	610
# B1SF-50SS	50.0	120.7	28.30	75.3+/-0.2	58.50	Stainless Steel 420C 55-58 HRC/ Stainless Steel 304	B1SF Flange Fixing	76.0	3	340
# B1SF-50C	50.0	120.7	28.30	75.3+/-0.2	58.50	Carbon Steel 60-66 HRC / Zinc plated Mild Steel	B1SF Flange Fixing	76.0	3	340

E&OE Pricing and all details subject to change without notice - Copyright Miniature Bearings Australia Pty Ltd
MBA Size Listings are a guide to sizes only and must not be solely relied on for critical design information.

MBA **MINIAMNURD**
BEARINGS
 Australia Pty Ltd



ABN 94 069 113 800

DISTRIBUTED BY

Ask us to put your name and address here

<http://www.minibearings.com.au/product>
 Ph +61 7 3349 1224
 Fax +61 7 3349 3801

Catalogue requests to catalogues@minibearings.com.au

