



MBA

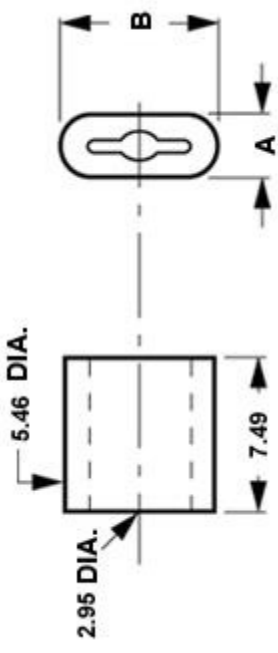
Attachments - Plugs - Synchronmesh

Recommended dimensions after crimping:

- 1.05 Cable - A=2.81 B=6.98
- 2.06 Cable - A=2.95 B=6.94
- 2.60 and 3.40 Cable - A=3.05 B=6.86

This catalogue to be read in conjunction with information at <http://www.minibearings.com.au/ogue/tech/synchronmesh/synchronmesh.pdf>

DIMENSIONS AFTER CRIMPING



Attachments - Plugs - Synchronmesh

Part Number	Material
# SM-PLUG	Annealed Brass
	For cable diameter mm
	All

E&OE Pricing and all details subject to change without notice - Copyright Miniature Bearings Australia Pty Ltd
 MBA Size Listings are a guide to sizes only and must not be solely relied on for critical design information.

MBA **MINIAMNURD**
BEARINGS
 Australia Pty Ltd



ABN 94 069 113 800

DISTRIBUTED BY

Ask us to put your name and address here

<http://www.minibearings.com.au/product>
 Ph +61 7 3349 1224
 Fax +61 7 3349 3801

Catalogue requests to catalogues@minibearings.com.au

