



MBA

Actuators - Screw - Translating - Screwjack - Size 25

Precision linear adjustment

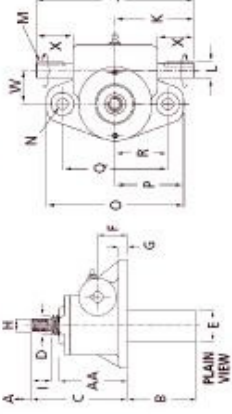
Body: Aluminium

Worm & Screw: Steel

Nut: Bronze



Upright Translating Screw (Standard)



Performance

Features: Precise Positioning, Self Locking, Uniform Lifting Speed, Quick, Sure Operation

Max. Lift Cap.: 100kN

Lifting Screw* - Dia. / Pitch (mm): 55 / 12

Worm Gear Ratios - Standard / Optional: 8:1 / 24:1

Turning of Worm for Raise of Lifting Screw - 8:1 Ratio: 1 for 1.5mm

Turning of Worm for Raise of Lifting Screw - 24:1 Ratio: 2 for 1mm

Max. Input Power per Actuator - 8:1 Ratio: 3.75kW

Max. Input Power per Actuator - 24:1 Ratio: 1.125kW

Start-Up Torque at Full Load** - 8:1 Ratio: 115.9Nm

Start-Up Torque at Full Load** - 24:1 Ratio: 60.5Nm

Weight with Base Raise of 150mm: 24.72kg

Weight for Each Additional 25mm Raise: 0.57kg

Actuator Static Efficiency - Standard / Optional: 0.206 / 0.272

Actuator Dynamic Efficiency - Standard / Optional: 0.132 / 0.190

*All metric machine screws have a trapezoidal thread form, single start as standard.

**For loads of 25% to 100% of actuator capacity, torque requirements are approx. proportional to the load.

Actuators - Screw - Translating - Screwjack - Size 25

Part Number	Ratio	Max Screw Length mm	Base Height (C) mm	Screw Length mm	Pipe Diameter (E) mm	Screw Size / Keyway mm	Shaft Length mm	Shaft Diameter (L) mm	Type
# SJT25-8-INV	8 : 1	100.0	200.0	80.0	73.0	M36x4 / 8x7x43	280	25 h6	Inverted
# SJT25-8	8 : 1	100.0	200.0	40.0	73.0	M36x4 / 8x7x41	280	25 h6	Upright
# SJT25-24-INV	24 : 1	100.0	200.0	80.0	73.0	M36x4 / 8x7x42	280	25 h6	Inverted
# SJT25-24	24 : 1	100.0	200.0	40.0	73.0	M36x4 / 8x7x40	280	25 h6	Upright

E&OE Pricing and all details subject to change without notice - Copyright Miniature Bearings Australia Pty Ltd
MBA Size Listings are a guide to sizes only and must not be solely relied on for critical design information.

MBA **MINIAMNURD**
BEARINGS
 Australia Pty Ltd



ABN 94 069 113 800

DISTRIBUTED BY

Ask us to put your name and address here

<http://www.minibearings.com.au/product>
 Ph +61 7 3349 1224
 Fax +61 7 3349 3801

Catalogue requests to catalogues@minibearings.com.au

