



MBA

Actuators - Screw - Translating - Screwjack - Size 19

Precision linear adjustment

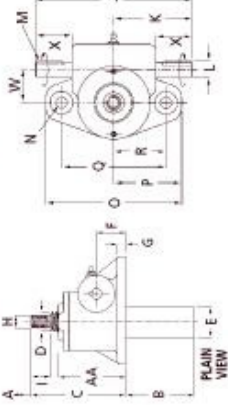
Body: Aluminium

Worm & Screw: Steel

Nut: Bronze



Upright Translating Screw (Standard)



Performance

Features: Precise Positioning, Self Locking, Uniform Lifting Speed, Quick, Sure Operation

Max. Lift Cap.: 50kN

Lifting Screw* - Dia. / Pitch (mm): 40 / 9

Worm Gear Ratios - Standard / Optional: 6:1 / 24:1

Turning of Worm for Raise of Lifting Screw - 6:1 Ratio: 1 for 1.5mm

Turning of Worm for Raise of Lifting Screw - 24:1 Ratio: 4 for 1.5mm

Max. Input Power per Actuator - 6:1 Ratio: 3kW

Max. Input Power per Actuator - 24:1 Ratio: 0.55kW

Start-Up Torque at Full Load** - 6:1 Ratio: 56.0Nm

Start-Up Torque at Full Load** - 24:1 Ratio: 25.5Nm

Weight with Base Raise of 150mm: 15.88kg

Weight for Each Additional 25mm Raise: 0.32kg

Actuator Static Efficiency - Standard / Optional: 0.213 / 0.281

Actuator Dynamic Efficiency - Standard / Optional: 0.117 / 0.172

*All metric machine screws have a trapezoidal thread form, single start as standard.

**For loads of 25% to 100% of actuator capacity, torque requirements are approx. proportional to the load.

Actuators - Screw - Translating - Screwjack - Size 19

Part Number	Ratio	Max Screw Length mm	Base Height (C) mm	Screw Length mm	Pipe Diameter (E) mm	Screw Size / Keyway mm	Shaft Length mm	Shaft Diameter (L) mm	Type
# SJT19-6	6 : 1	100.0	185.0	40.0	60.3	M24x3 / 6x6x33	230	19 h6	Upright
# SJT19-24	24 : 1	100.0	185.0	40.0	60.3	M24x3 / 6x6x32	230	19 h6	Upright

E&OE Pricing and all details subject to change without notice - Copyright Miniature Bearings Australia Pty Ltd
MBA Size Listings are a guide to sizes only and must not be solely relied on for critical design information.

