



# MBA

## Actuators - Screw - Translating - Screwjack - Size 16

Precision linear adjustment

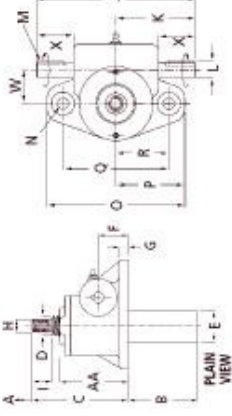
Body: Aluminium

Worm & Screw: Steel

Nut: Bronze



Upright Translating Screw (Standard)



### Performance

Features: Precise Positioning, Self Locking, Uniform Lifting Speed, Quick, Sure Operation

Max. Lift Cap.: 25kN

Lifting Screw\* - Dia. / Pitch (mm): 30 / 6

Worm Gear Ratios - Standard / Optional: 6:1 / 24:1

Turning of Worm for Raise of Lifting Screw - 6:1 Ratio: 1 for 1mm

Turning of Worm for Raise of Lifting Screw - 24:1 Ratio: 4 for 1mm

Max. Input Power per Actuator - 6:1 Ratio: 1.5kW

Max. Input Power per Actuator - 24:1 Ratio: 0.375kW

Start-Up Torque at Full Load\*\* - 6:1 Ratio: 19.8Nm

Start-Up Torque at Full Load\*\* - 24:1 Ratio: 8.7Nm

Weight with Base Raise of 150mm: 8.17kg

Weight for Each Additional 25mm Raise: 0.21kg

Actuator Static Efficiency - Standard / Optional: 0.201 / 0.264

Actuator Dynamic Efficiency - Standard / Optional: 0.115 / 0.167

\*All metric machine screws have a trapezoidal thread form, single start as standard.

\*\*For loads of 25% to 100% of actuator capacity, torque requirements are approx. proportional to the load

### Actuators - Screw - Translating - Screwjack - Size 16

Part Number	Ratio	Max Screw Length mm	Base Height (C) mm	Screw Length mm	Pipe Diameter (E) mm	Screw Size / Keyway mm	Shaft Length mm	Shaft Diameter (L) mm	Type
# SJT16-6-INV	6 : 1	100.0	145.0	55.0	48.3	M20x2.5 / 5x5x28	180	16 js6	Inverted
# SJT16-6	6 : 1	100.0	145.0	30.0	48.3	M20x2.5 / 5x5x26	180	16 js6	Upright
# SJT16-24-INV	24 : 1	100.0	145.0	55.0	48.3	M20x2.5 / 5x5x27	180	16 js6	Inverted
# SJT16-24	24 : 1	100.0	145.0	30.0	48.3	M20x2.5 / 5x5x25	180	16 js6	Upright

E&OE Pricing and all details subject to change without notice - Copyright Miniature Bearings Australia Pty Ltd  
MBA Size Listings are a guide to sizes only and must not be solely relied on for critical design information.

**MBA** **MINIAMNURD**  
**BEARINGS**  
 Australia Pty Ltd



ABN 94 069 113 800

DISTRIBUTED BY

Ask us to put your name and address here

<http://www.minibearings.com.au/product>  
 Ph +61 7 3349 1224  
 Fax +61 7 3349 3801

Catalogue requests to [catalogues@minibearings.com.au](mailto:catalogues@minibearings.com.au)

