

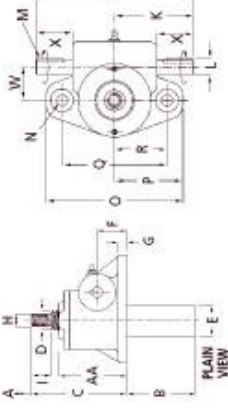


# MBA

## Actuators - Screw - Translating - Screwjack - Size 10 and 14



Upright Translating Screw (Standard)



Precision linear adjustment

Body: Aluminium

Worm & Screw: Steel

Nut: Bronze

### Performance

Features: Precise Positioning, Self Locking, Uniform Lifting Speed, Quick, Sure Operation

Max. Lift Cap.: 5kN (SJT10), 10kN (SJT14)

Lifting Screw\* - Dia. / Pitch (mm): 16 / 3 (SJT10), 20 / 5 (SJT14)

Worm Gear Ratios - Standard / Optional: 5:1 / 20:1

Turning of Worm for Raise of Lifting Screw - 5:1 Ratio: 5 for 3mm (SJT10), 1 for 1mm (SJT14)

Turning of Worm for Raise of Lifting Screw - 20:1 Ratio: 20 for 3mm (SJT10), 4 for 1mm (SJT14)

Max. Input Power per Actuator - 5:1 Ratio: 0.25kW (SJT10), 0.375kW (SJT14)

Max. Input Power per Actuator - 20:1 Ratio: 0.12kW (SJT10), 0.19kW (SJT14)

Start-Up Torque at Full Load\*\* - 5:1 Ratio: 2.5Nm (SJT10), 6.8Nm (SJT14)

Start-Up Torque at Full Load\*\* - 20:1 Ratio: 1.1Nm (SJT10), 3.0Nm (SJT14)

Weight with Base Raise of 150mm: 1.03kg (SJT10), 2.27kg (SJT14)

Weight for Each Additional 25mm Raise: 0.073kg (SJT10), 0.13kg (SJT14)

Actuator Static Efficiency - Standard / Optional: 0.189 / 0.107 (SJT10), 0.233 / 0.130 (SJT14)

Actuator Dynamic Efficiency - Standard / Optional: 0.252 / 0.160 (SJT10), 0.306 / 0.194 (SJT14)

\*All metric machine screws have a trapezoidal thread form, single start as standard.

\*\*For loads of 25% to 100% of actuator capacity, torque requirements are approx. proportional to the load.

### Actuators - Screw - Translating - Screwjack - Size 10 and 14

Part Number	Ratio	Max Screw Length mm	Base Height (C) mm	Screw Length mm	Pipe Diameter (E) mm	Screw Size / Keyway mm	Shaft Length mm	Shaft Diameter (L) mm	Type
# SJT10-5-INV	5 : 1	100.0	95.0	40.0	26.7	M10x1.5 / 3x3x19	120	10 h6	Inverted
# SJT10-5	5 : 1	100.0	95.0	20.0	26.7	M10x1.5 / 3x3x19	120	10 h6	Upright
# SJT14-5-INV	5 : 1	100.0	125.0	45.0	33.4	M12x1.75 / 5x5x25	150	14 h6	Inverted
# SJT14-5	5 : 1	100.0	125.0	24.0	33.4	M12x1.75 / 5x5x25	150	14 h6	Upright

E&OE Pricing and all details subject to change without notice - Copyright Miniature Bearings Australia Pty Ltd  
MBA Size Listings are a guide to sizes only and must not be solely relied on for critical design information.

## Actuators - Screw - Translating - Screwjack - Size 10 and 14

Part Number	Ratio	Max Screw Length mm	Base Height (C) mm	Screw Length mm	Pipe Diameter (E) mm	Screw Size / Keyway mm	Shaft Length mm	Shaft Diameter (L) mm	Type
# SJT10-20-INV	20 : 1	100.0	95.0	40.0	26.7	M10x1.5 / 3x3x18	120	10 h6	Inverted
# SJT10-20	20 : 1	100.0	95.0	20.0	26.7	M10x1.5 / 3x3x18	120	10 h6	Upright
# SJT14-20-INV	20 : 1	100.0	125.0	45.0	33.4	M12x1.75 / 5x5x25	150	14 h6	Inverted
# SJT14-20	20 : 1	100.0	125.0	24.0	33.4	M12x1.75 / 5x5x25	150	14 h6	Upright

E&OE Pricing and all details subject to change without notice - Copyright Miniature Bearings Australia Pty Ltd  
MBA Size Listings are a guide to sizes only and must not be solely relied on for critical design information.

**MBA** **MINIAMNURD**  
**BEARINGS**  
 Australia Pty Ltd



ABN 94 069 113 800

DISTRIBUTED BY

Ask us to put your name and address here

<http://www.minibearings.com.au/product>  
 Ph +61 7 3349 1224  
 Fax +61 7 3349 3801

Catalogue requests to [catalogues@minibearings.com.au](mailto:catalogues@minibearings.com.au)

