



MBA

Actuators - Screw - Rotating - Screwjack - Size 19

Precision linear adjustment

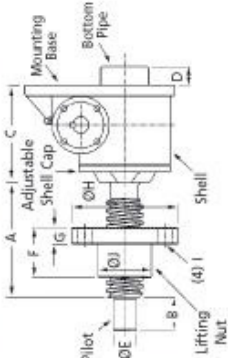
Body: Aluminium

Worm & Screw: Steel

Nut: Bronze



Upright Rotating Screw (Standard)



Performance
 Features: Precise Positioning, Self Locking, Uniform Lifting Speed, Quick, Sure Operation

Max. Lift Cap.: 50kN

Lifting Screw* - Dia. / Pitch (mm): 40 / 9

Worm Gear Ratios - Standard / Optional: 6:1 / 24:1

Turning of Worm for Raise of Lifting Screw - 6:1 Ratio: 1 for 1.5mm

Turning of Worm for Raise of Lifting Screw - 24:1 Ratio: 4 for 1.5mm

Max. Input Power per Actuator - 6:1 Ratio: 3kW

Max. Input Power per Actuator - 24:1 Ratio: 0.55kW

Start-Up Torque at Full Load** - 6:1 Ratio: 56.0Nm

Start-Up Torque at Full Load** - 24:1 Ratio: 25.5Nm

Weight with Base Raise of 150mm: 15.88kg

Weight for Each Additional 25mm Raise: 0.32kg

Actuator Static Efficiency - Standard / Optional: 0.213 / 0.281

Actuator Dynamic Efficiency - Standard / Optional: 0.117 / 0.172

*All metric machine screws have a trapezoidal thread form, single start as standard.

**For loads of 25% to 100% of actuator capacity, torque requirements are approx. proportional to the load.

Actuators - Screw - Rotating - Screwjack - Size 19

Part Number	Ratio	Length from Base to Screw Top mm	Base Height (C) mm	Shaft Diameter (E) mm	Lifting Nut Height (F) mm	Lifting Nut Flange Height (G) mm	Flange Diameter (H) mm	Lifting Nut Diameter (J) mm	Type
# SJR19-6-INV	6 : 1	Raise + 80	138.0	25.0	65.0	20	115	55	Inverted
# SJR19-6	6 : 1	Raise + 80	138.0	25.0	65.0	20	115	55	Upright
# SJR19-24-INV	24 : 1	Raise + 80	138.0	25.0	65.0	20	115	55	Inverted
# SJR19-24	24 : 1	Raise + 80	138.0	25.0	65.0	20	115	55	Upright

E&OE Pricing and all details subject to change without notice - Copyright Miniature Bearings Australia Pty Ltd
 MBA Size Listings are a guide to sizes only and must not be solely relied on for critical design information.

MBA **MINIAMNURD**
BEARINGS
 Australia Pty Ltd



ABN 94 069 113 800

DISTRIBUTED BY

Ask us to put your name and address here

<http://www.minibearings.com.au/product>
 Ph +61 7 3349 1224
 Fax +61 7 3349 3801

Catalogue requests to catalogues@minibearings.com.au

