



MBA

Actuators - Screw - Rotating - Screwjack - Size 16

Precision linear adjustment

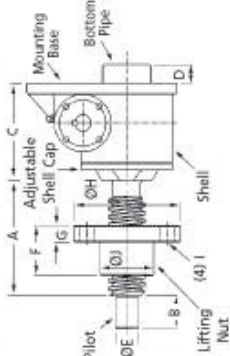
Body: Aluminium

Worm & Screw: Steel

Nut: Bronze



Upright Rotating Screw (Standard)



Performance

Features: Precise Positioning, Self Locking, Uniform Lifting Speed, Quick, Sure Operation

Max. Lift Cap.: 25kN

Lifting Screw* - Dia. / Pitch (mm): 30 / 6

Worm Gear Ratios - Standard / Optional: 6:1 / 24:1

Turning of Worm for Raise of Lifting Screw - 6:1 Ratio: 1 for 1mm

Turning of Worm for Raise of Lifting Screw - 24:1 Ratio: 4 for 1mm

Max. Input Power per Actuator - 6:1 Ratio: 1.5kW

Max. Input Power per Actuator - 24:1 Ratio: 0.375kW

Start-Up Torque at Full Load** - 6:1 Ratio: 19.8Nm

Start-Up Torque at Full Load** - 24:1 Ratio: 8.7Nm

Weight with Base Raise of 150mm: 8.17kg

Weight for Each Additional 25mm Raise: 0.21kg

Actuator Static Efficiency - Standard / Optional: 0.201 / 0.264

Actuator Dynamic Efficiency - Standard / Optional: 0.115 / 0.167

*All metric machine screws have a trapezoidal thread form, single start as standard.

**For loads of 25% to 100% of actuator capacity, torque requirements are approx. proportional to the load.

Actuators - Screw - Rotating - Screwjack - Size 16

Part Number	Ratio	Length from Base to Screw Top mm	Base Height (C) mm	Shaft Diameter (E) mm	Lifting Nut Height (F) mm	Lifting Nut Flange Height (G) mm	Flange Diameter (H) mm	Lifting Nut Diameter (J) mm	Type
# SJR16-6-INV	6 : 1	Raise + 60	103.5	20.0	40.0	15	90	40	Inverted
# SJR16-6	6 : 1	Raise + 60	103.5	20.0	40.0	15	90	40	Upright
# SJR16-24-INV	24 : 1	Raise + 60	103.5	20.0	40.0	15	90	40	Inverted
# SJR16-24	24 : 1	Raise + 60	103.5	20.0	40.0	15	90	40	Upright

E&OE Pricing and all details subject to change without notice - Copyright Miniature Bearings Australia Pty Ltd
MBA Size Listings are a guide to sizes only and must not be solely relied on for critical design information.

MBA **MINIAMNURD**
BEARINGS
 Australia Pty Ltd



ABN 94 069 113 800

DISTRIBUTED BY

Ask us to put your name and address here

<http://www.minibearings.com.au/product>
 Ph +61 7 3349 1224
 Fax +61 7 3349 3801

Catalogue requests to catalogues@minibearings.com.au

