



# MBA

## Actuators - Screw - Rotating - Screwjack - Size 10 and 14

Precision linear adjustment

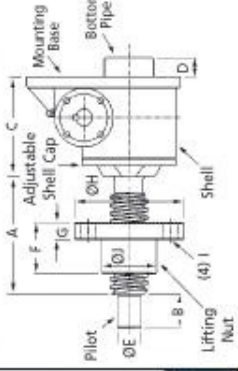
Body: Aluminium

Worm & Screw: Steel

Nut: Bronze



Upright Rotating Screw (Standard)



### Performance

Features: Precise Positioning, Self Locking, Uniform Lifting Speed, Quick, Sure Operation

Max. Lift Cap.: 5kN (SJR10), 10kN (SJR14)

Lifting Screw\* - Dia. / Pitch (mm): 16 / 3 (SJR10), 20 / 5 (SJR14)

Worm Gear Ratios - Standard / Optional: 5:1 / 20:1

Turning of Worm for Raise of Lifting Screw - 5:1 Ratio: 5 for 3mm (SJR10), 1 for 1mm (SJR14)

Turning of Worm for Raise of Lifting Screw - 20:1 Ratio: 20 for 3mm (SJR10), 4 for 1mm (SJR14)

Max. Input Power per Actuator - 5:1 Ratio: 0.25kW (SJR10), 0.375kW (SJR14)

Max. Input Power per Actuator - 20:1 Ratio: 0.12kW (SJR10), 0.19kW (SJR14)

Start-Up Torque at Full Load\*\* - 5:1 Ratio: 2.5Nm (SJR10), 6.8Nm (SJR14)

Start-Up Torque at Full Load\*\* - 20:1 Ratio: 1.1Nm (SJR10), 3.0Nm (SJR14)

Weight with Base Raise of 150mm: 1.03kg (SJR10), 2.27kg (SJR14)

Weight for Each Additional 25mm Raise: 0.073kg (SJR10), 0.13kg (SJR14)

Actuator Static Efficiency - Standard / Optional: 0.189 / 0.107 (SJR10), 0.233 / 0.130 (SJR14)

Actuator Dynamic Efficiency - Standard / Optional: 0.252 / 0.160 (SJR10), 0.306 / 0.194 (SJR14)

\*All metric machine screws have a trapezoidal thread form, single start as standard.

\*\*For loads of 25% to 100% of actuator capacity, torque requirements are approx. proportional to the load.

## Actuators - Screw - Rotating - Screwjack - Size 10 and 14

Part Number	Ratio	Length from Base to Screw Top mm	Base Height (C) mm	Shaft Diameter (E) mm	Lifting Nut Height (F) mm	Lifting Nut Flange Height (G) mm	Flange Diameter (H) mm	Lifting Nut Diameter (J) mm	Type
# SJR10-5-INV	5 : 1	Raise + 40	64.0	10.0	25.0	10	60	25	Inverted
# SJR10-5	5 : 1	Raise + 40	64.0	10.0	25.0	10	60	25	Upright
# SJR14-5-INV	5 : 1	Raise + 44	90.0	12.0	35.0	12	80	35	Inverted
# SJR14-5	5 : 1	Raise + 44	90.0	12.0	35.0	12	80	35	Upright
# SJR10-20-INV	20 : 1	Raise + 40	64.0	10.0	25.0	10	60	25	Inverted
# SJR10-20	20 : 1	Raise + 40	64.0	10.0	25.0	10	60	25	Upright

E&OE Pricing and all details subject to change without notice - Copyright Miniature Bearings Australia Pty Ltd  
MBA Size Listings are a guide to sizes only and must not be solely relied on for critical design information.

## Actuators - Screw - Rotating - Screwjack - Size 10 and 14

Part Number	Ratio	Length from Base to Screw Top mm	Base Height (C) mm	Shaft Diameter (E) mm	Lifting Nut Height (F) mm	Lifting Nut Flange Height (G) mm	Flange Diameter (H) mm	Lifting Nut Diameter (J) mm	Type
# SJR14-20-INV	20 : 1	Raise + 44	90.0	12.0	35.0	12	80	35	Inverted
# SJR14-20	20 : 1	Raise + 44	90.0	12.0	35.0	12	80	35	Upright

E&OE Pricing and all details subject to change without notice - Copyright Miniature Bearings Australia Pty Ltd  
MBA Size Listings are a guide to sizes only and must not be solely relied on for critical design information.

**MBA** **MINIAMNURD**  
**BEARINGS**  
 Australia Pty Ltd



ABN 94 069 113 800

DISTRIBUTED BY

Ask us to put your name and address here

<http://www.minibearings.com.au/product>  
 Ph +61 7 3349 1224  
 Fax +61 7 3349 3801

Catalogue requests to [catalogues@minibearings.com.au](mailto:catalogues@minibearings.com.au)

